

Knife Gate Valve

Flange type, DN50-600



Application

Drinking and neutral water 0 - 70°C

Specification

Size Range: DN50-600

Maximum working Pressure: DN50-DN100: 10 bar,
DN125-DN200: 14 bar, DN250-DN300: 12 bar, DN350-
DN400: 10 bar, DN450-DN550 8 bar, DN600: 5 bar

Medium: Drinking and neutral water up to 70°C

Design: EN1074

Face to face: MSS SP-81

Flange connections: EN1092-2

Pressure test: API-598

Operation: handwheel / Electric / Pneumatic / Gear Box

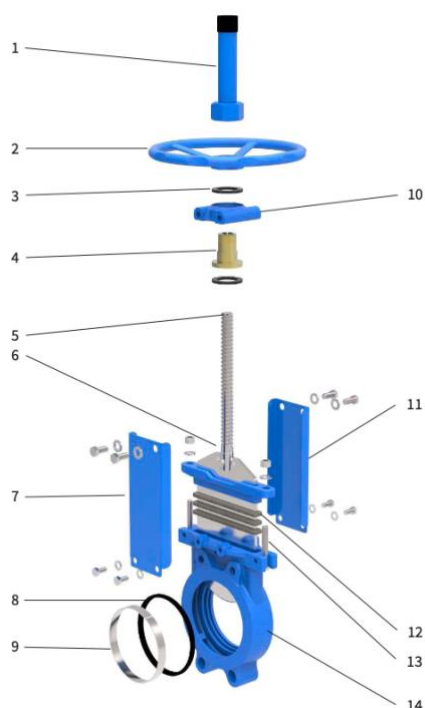
Features

- Unidirectional sealing
 - 1PC Body design
 - Full port design
 - Mixed with a variety of materials packing
 - Coated with FB epoxy minimum 250 µm thickness
- Blue color RAL5015



Description:

Knife gate valve is composed by a replaceable rubber seal knife gate structure, and the sealing is produced with the connection between gate and rubber seals. The main feature is that the rubber sealing ring is settled in the valve seat and is locked by metal seat, which will prevent rubber seal from detaching when opening and closing the valve. If the seal is broken, you can remove the metal seat and replace the rubber seal, which will greatly improve valve' working efficiency. This valve is a high-performance product. The knife gate valve can be equipped with pneumatic actuators, in order to meet the requirements of different industrial and mining use.

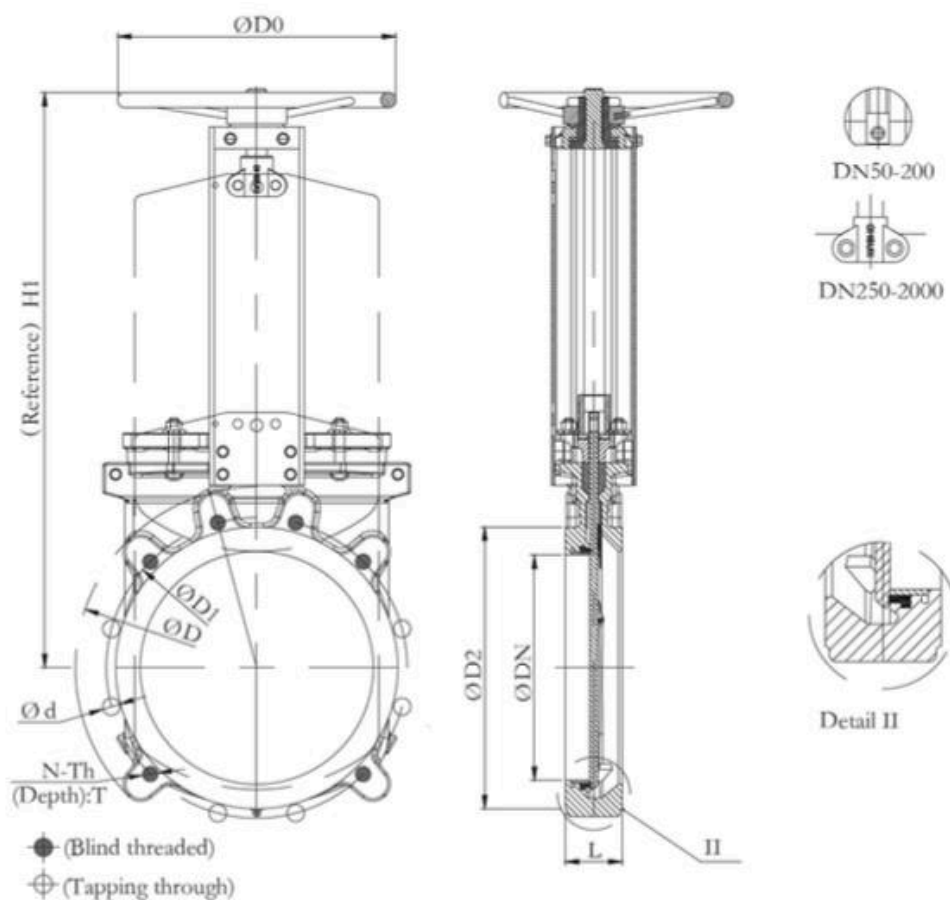


Item	Part Name	Material
1	Handle Cover	Q235 + Painting
2	Hand Wheel	Ductile Iron
3	Bearing	ZChSnSb10-6
4	Stem Nut	Brass
5	Stem	Stainless Steel
6	Disc	Stainless Steel
7	Yoke	Q235
8	Seat	EPDM / NBR
9	Seat Cover	Q235 / Stainless Steel
10	Yok Head	Ductile Iron
11	Packing Gland	WCB / CF8
12	Packing	Aramid PRFE
13	Bolt	Stainless Steel
14	Body	Stainless Steel

** All dimensions are in mm and weights in kg. The designation, technical data and others are non-binding and subject to change.*

Knife Gate Valve

Flange type, DN50-600



DN	Flange Drilling	L	H1	D	D1	D2	D0	n- $\varnothing d$	N-Th	ALVACO Ref. No.
50	PN10/16	48	260	165	125	99	180	4 x $\varnothing 18$	4-M16	VGU05016
65	PN10/16	48	292	185	145	118	200	4 x $\varnothing 18$	4-M16	VGU06516
80	PN10/16	51	320	200	160	132	200	8 x $\varnothing 18$	8-M16	VGU08016
100	PN10/16	51	358	220	180	156	240	8 x $\varnothing 18$	8-M16	VGU10016
125	PN10/16	57	395	250	210	184	260	8 x $\varnothing 18$	8-M16	VGU12516
150	PN10/16	57	450	285	240	211	280	8 x $\varnothing 23$	8-M20	VGU15016
200	PN10	70	532	340	295	266	300	8 x $\varnothing 23$	8-M20	VGU20010
250	PN10	70	670	395	350	319	320	12 x $\varnothing 23$	12-M20	VGU25010
300	PN10	76	758	445	400	370	350	12 x $\varnothing 23$	12-M20	VGU30010
350	PN10	76	857	505	460	429	400	16 x $\varnothing 23$	16-M20	VGU35010
400	PN10	89	946	565	515	480	450	16 x $\varnothing 27$	16-M24	VGU40010
500	PN10	127	1295	670	620	582	650	20 x $\varnothing 27$	20-M24	VGU50010
600	PN10	154	1425	780	725	682	650	20 x $\varnothing 31$	20-M27	VGU60010

* All dimensions are in mm and weights in kg. The designation, technical data and others are non-binding and subject to change.